


Farmers Electric Cooperative

A Touchstone Energy Cooperative 

301 N. Hillcrest
Sulphur Springs, TX 75482

2000 I-30 E
Greenville, TX 75402

108 W. Marble
Wylie, TX 75098

September 8, 2017

Office of Hopkins County Judge
PO Box 288
Sulphur Springs, TX 75483

Farmers Electric Cooperative Member: Hector Vazquez
Service Order Number: 1709001106

Dear Judge Newsom,

Farmers Electric Cooperative, Inc. is requesting permission to re-route existing electrical power distribution facilities across Quail Lane, which is located approximately 1100 feet south east of Colquitt Rd located in Hopkins County.

Site location map and construction sketches are enclosed. The construction sketch details the proposed work. All road crossing will have a minimum vertical clearance of 22 feet.

If you have any questions, please contact your field engineering representative Patrick Covington at 903-513-1331 mobile.

Please send approval back to our engineering group at: engcoordinators@farmersselectric.coop

Sincerely,

Patrick Covington
Engineering Assistant


Enclosures

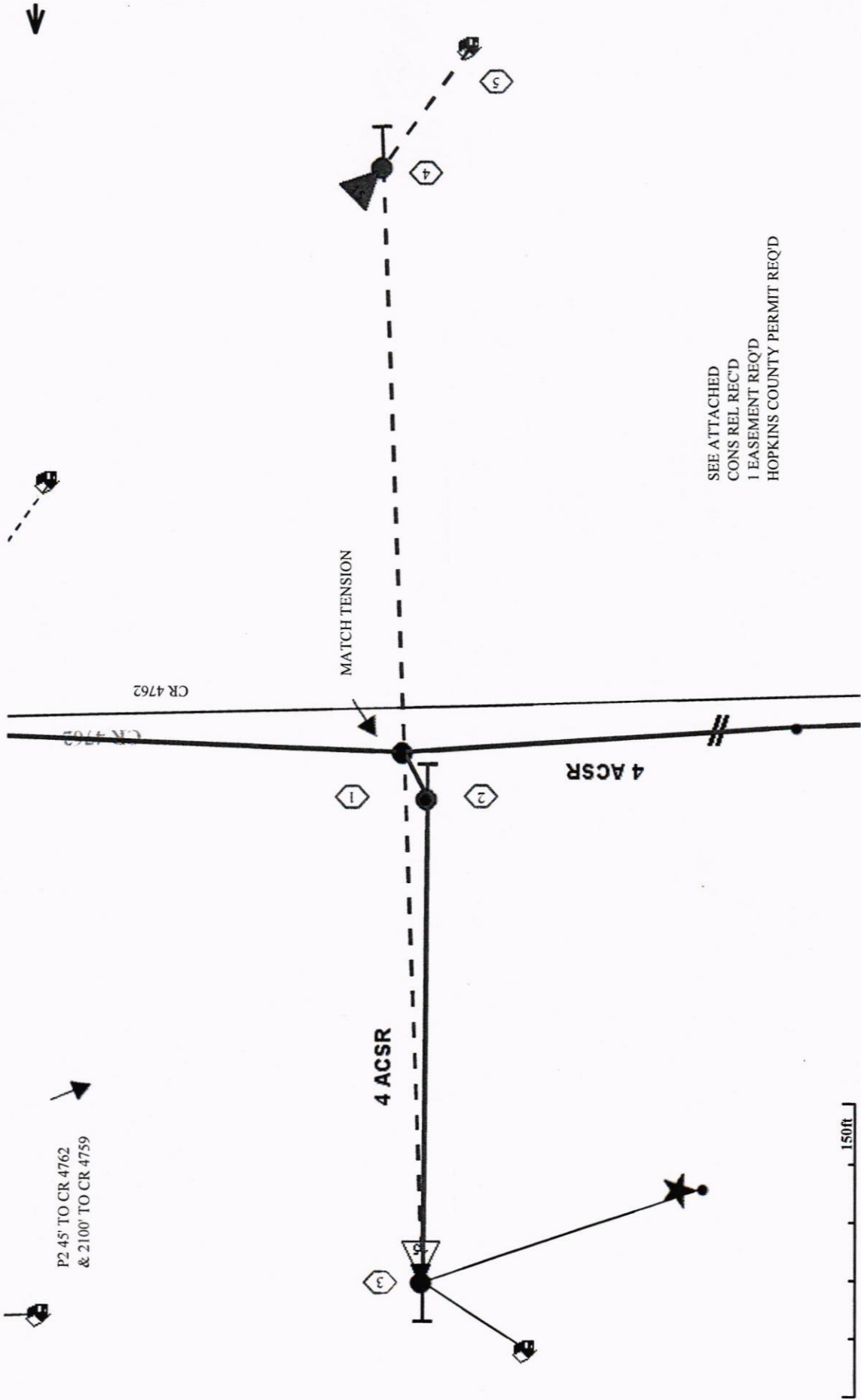
Submitted by:
Tricia Griffin
Field Engineering Coordinator
Office: 903-453-0563 Fax: 903-453-0663
tgriffin@farmersselectric.coop

Approved Denied

Date: 10-4-17

County Comments:





SEE ATTACHED
 CONS REL REC'D
 1 EASEMENT REQ'D
 HOPKINS COUNTY PERMIT REQ'D

P2 45' TO CR 4762
 & 2100' TO CR 4759

County Road 4759

County Road 4762

County Road 4762

County Road 4762

HOPKINS



Michael Sanders
S/O #1909005763
across CR 4762 from
Pole #084254

oad 4759